

16" Oil Rubbed Bronze Square Color Changing LED Rain Shower Head

16" Oil Rubbed Bronze Square Color Changing LED Rain Shower Head

- Before you begin, read the installation instructions below. Observe all local building and safety codes.
- Unpack and inspect the product for any shipping damages. If you find damages, do not install. If you need assistance or have questions while installing your shower set, contact Customer Service.
- We recommend consulting a professional if you are unfamiliar with installing bathroom fixtures, and plumbing.

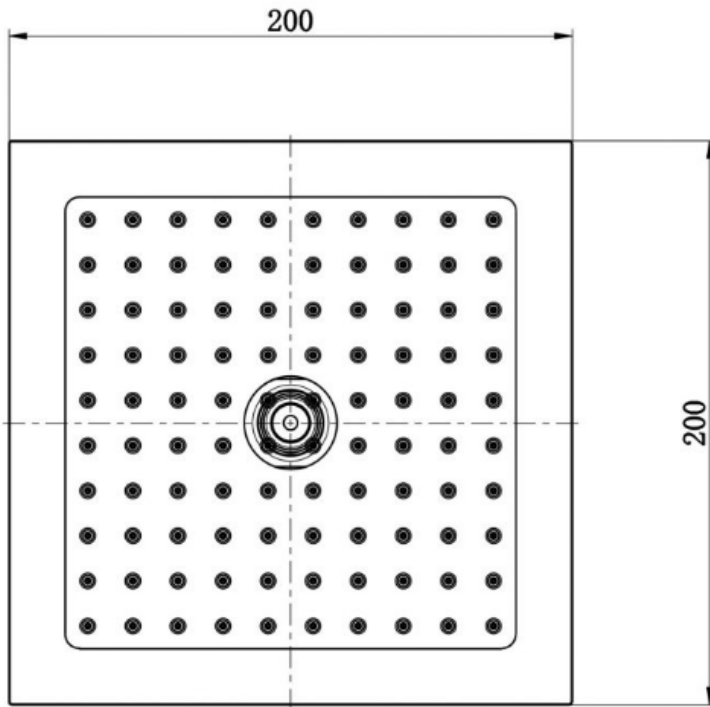
TOOLS AND MATERIALS:

- Screwdriver
- Teflon Tape



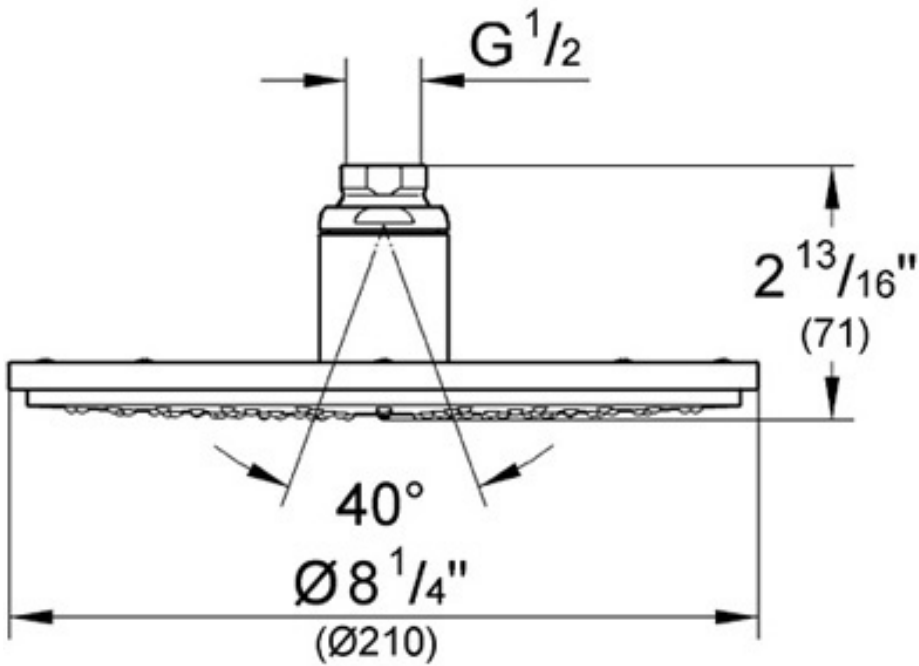
These instructions are meant as a general guideline. Always check the package for instructions for your particular product.

1. Remove your existing shower head
2. Clean the shower arm supply pipe threads
3. If a gasket is not included, wrap the shower arm supply pipe threads with Teflon Tape
4. Screw new shower head onto the shower arm supply pipe threads clockwise and hand tighten



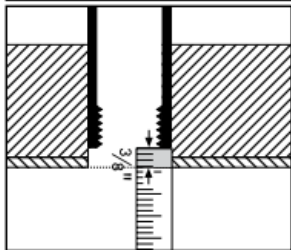
(<http://www.bathselect.com/Led-Showerhead-with-Mixer->

p/bled6109-ct.htm)



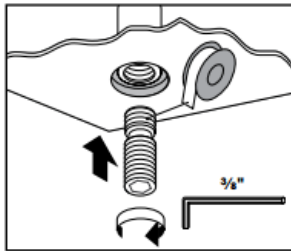
(<http://www.bathselect.com/Led-Showerhead-with-Mixer->

p/bled6109-ct.htm)



27390XX1 Installation

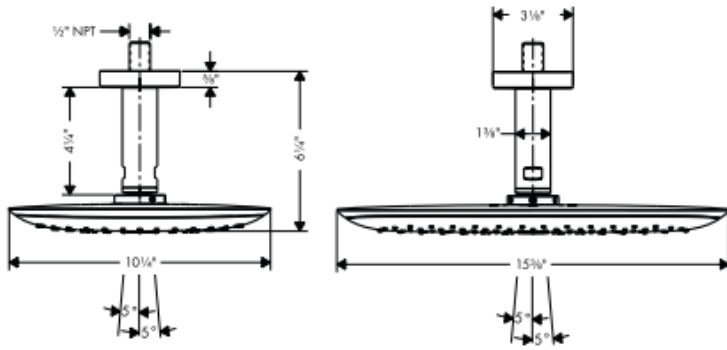
Rough-in: install a 1/2" NPT female fitting, recessed 3/8" inside the surface of the finished ceiling.



Wrap the threads on 1/2" NPT part of the nipple with Teflon tape.
Install the mounting nipple using a 3/8" Allen wrench (not included).

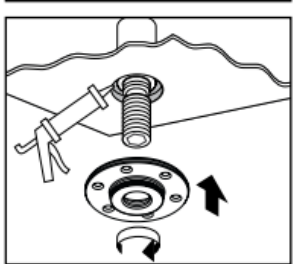
(<http://www.bathselect.com/Led-Showerhead-with-Mixer-p/bled6109->

ct.htm)



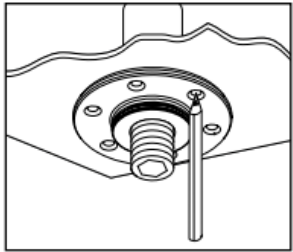
(<http://www.bathselect.com/Led-Showerhead-with-Mixer->

p/bled6109-ct.htm)

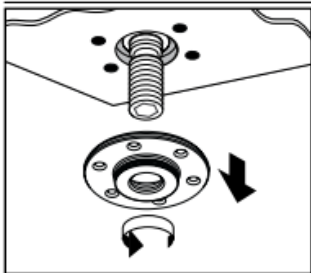


Seal the ceiling around the nipple using waterproof sealant.

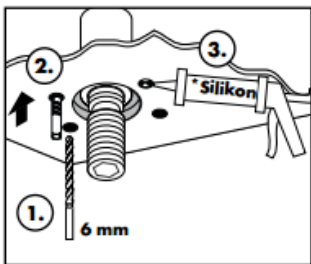
Install the mounting ring.



Mark the positions of four screw holes.



Remove the mounting ring.



Drill the screw holes using a 6 mm bit (1).

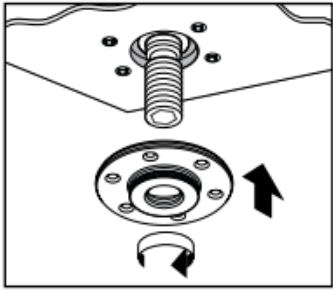
Install the anchors (2).

Seal the ceiling around the anchors using waterproof sealant (3).

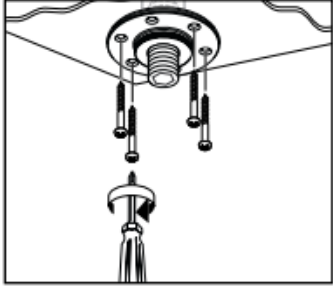
(<http://www.bathselect.com/Led-Showerhead-with-Mixer->

p/bled6109-ct.htm)





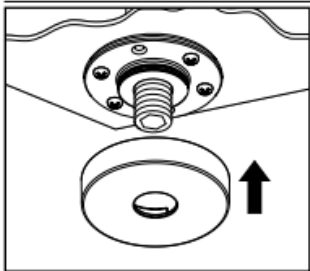
Install the mounting ring.



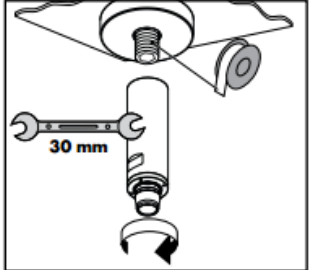
Install the screws.

(<http://www.bathselect.com/Led-Showerhead-with-Mixer->

p/bled6109-ct.htm)



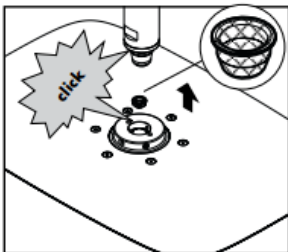
Install the escutcheon.



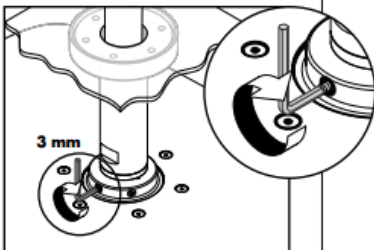
Wrap the threads on the nipple using Teflon tape.
Install the extension pipe.

(<http://www.bathselect.com/Led-Showerhead-with-Mixer->

p/bled6109-ct.htm)



Make sure that the filter is installed in the showerhead.
Push the showerhead against the extension pipe until it clicks.



⚠ Tighten the safety screw using a 3 mm Allen wrench.
! Failure to tighten the safety screw may result in injury or product damage.

(<http://www.bathselect.com/Led-Showerhead-with-Mixer->

p/bled6109-ct.htm)

